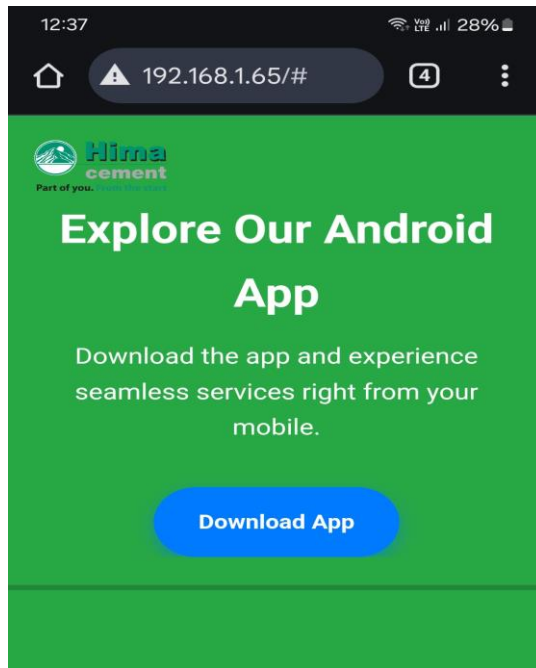
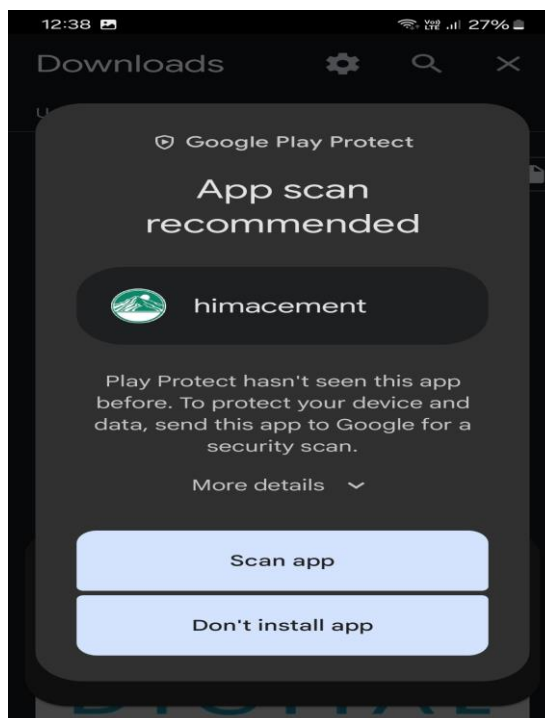


# USER MANUAL

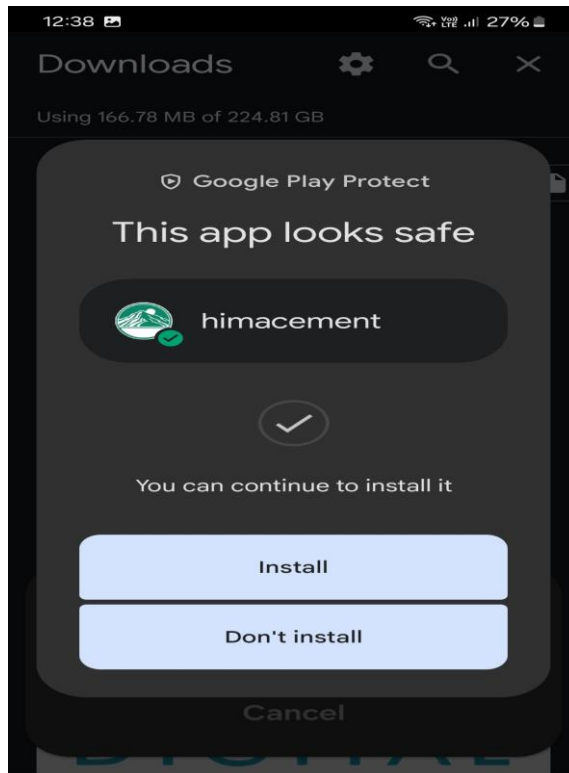
1. Please enter the given IP Address : [eapk@himacement.org](http://eapk@himacement.org) in the web browser to download the application and then click on the **Download App**



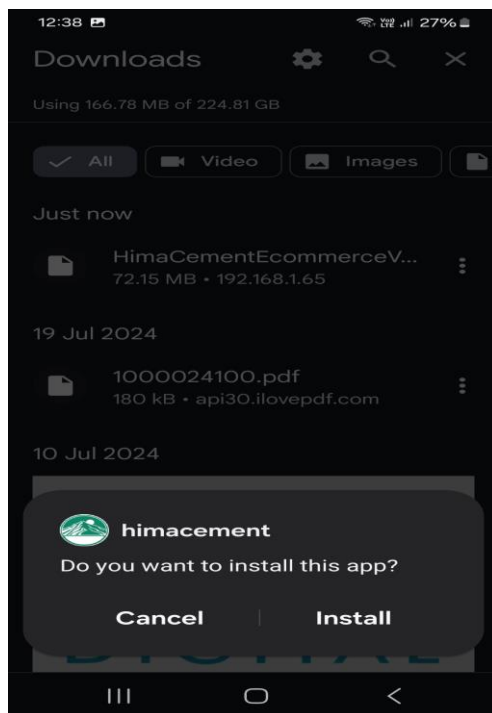
2. Once after you click on the Download App, a pop up screen will be popped asking either **Scan App** or **Don't install App**. Click on **Scan App**.



- Once after the scanning is completed, pop up of asking **Install** or **Don't install** will be popped so click on **Install**.



- Click on **Install**



5. Click on **Open**, and run the application.

